

WIFI Digital Heating Thermostat User Manual

Many thanks for your selection of our products and services, and also for your trust and support to us.



Search for "Smart RM or smart life"
Download the Wifi App with the following icon



- Turn on the thermostat, press and hold the key combination "SET/ [grid icon]" and "OK/ [gear icon]"
Activate WIFI distribution network icon
- The App advanced password is 123456

Features

Appearance

- Standard total Size is 86*86mm
- Touch buttons to make simple operation
- The visible thickness above the wall is only 15mm
- 86mm hidden box and 60mm European box
- Flat mounting, it is easy to install
- Display size : 64*64mm
- Color: white, black

Functions

- Including built-in sensor and external sensor
- 0.5°C accuracy keeps temperature within the level you set.
- Children lock to prevent misoperation by children
- Data memory when power is off.
- Holiday mode make you enjoy more comfortable temperature in holiday
- The temperature of external sensor can be checked

Product Specifications

- ☆ Power: 90-240Vac 50/60HZ
- ☆ Display accuracy: 0.5°C
- ☆ Probe sensor: NTC(10k)1%
- ☆ Contact capacity: 3A/250V(WW);16A/250V(WE)
- ☆ Working environment temperature: 0~90°C
- ☆ Range of temperature adjustment: 5~35°C
- ☆ Range of temperature display: 0~40°C
- ☆ Insulating condition: Normal environment
- ☆ Running program: Set per 1 week as a cycle
- ☆ Output: Switch relay
- ☆ Installation: Wall mounted or on battery seat
- ☆ Size(mm): 86*86*27

Before wiring and installing

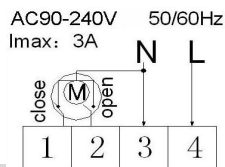
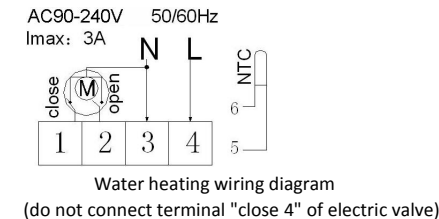
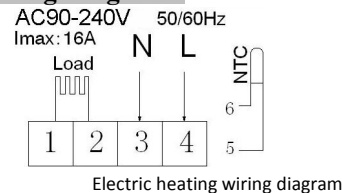
- Read these instructions carefully. Failure to follow them could damage the product or cause a hazardous condition.
- Check the ratings given in the instructions and on the product to make sure the produce is suitable for your application.
- Installer must be a trained experienced service technician.
- After installation is complete, check out produce operation as provided in these instructions



Electrical shock or equipment Damage Hazard. or short equipment circuitry.

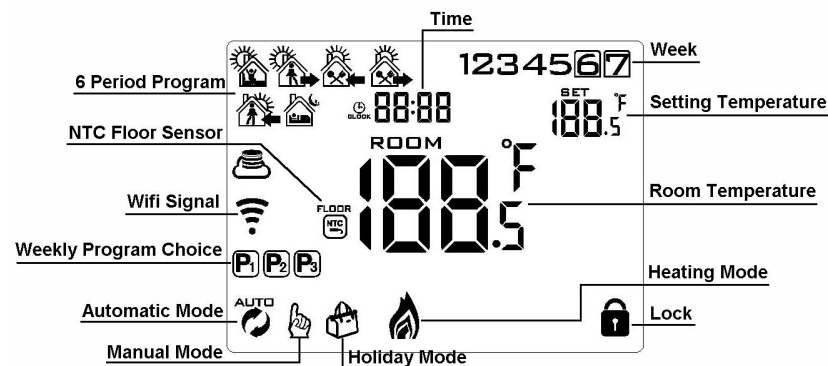
Disconnect power supply before installation

Wiring Diagram



Water heating and gas wall-hung boiler heating, no contact wiring diagram, (disconnection when electric valve close)
Note: 5&6 connect with gas boiler, 3&4 connect with N and L line. If normally closed thermal actuator, then connect with 1&3, if normally open thermal actuator, then connect with 2&3

Displays



Description of icon

- Auto mode; run preset program
- Temporary manual mode
- Holiday mode, Holiday days and temperature can be set to run in countdown mode
- Heating, icon disappears to stop heating
- WIFI connection, flashing EZ distribution mode
- WIFI status: Disconnection
- Manual mode
- Clock
- External NTC sensor
- Child lock
- Cloud icon: flashing AP distribution network mode

Operation key

N	symbols	represent
O		
A		Turn ON/OFF: Short press to turn on/ turn off

B		1 Short press to switch automatic mode and manual mode 2 Turn on thermostat, long press for 3-5 seconds to enter into programmable setting 3. Turn off thermostat, long press for 3-5 seconds to enter into advanced setting
C		1 Confirm key: use it with key 2 Only short press it to set time 3 Turn on thermostat, long press it for 3-5 seconds to holiday mode setting. Appear OFF , press or change to ON, then press to confirm opening holiday mode
B		1 Decrease key 2 Long press to lock /unlock
D		1 Increase key : 2 Long press to inquire external sensor temperature 3 In the Auto model, press or enter to temporary manual mode

Programmable

5+2 (factory default), 6+1 and 7 models 6 times period setting for user choose. In the advanced options choose model of you need, under power on state, long press for 3-5 seconds enter into programming mode setting, then short press choose: hour, minute, time period, and press and to adjust data, finished setting, about 10 seconds will automatic save and exist.

Wake up	Out door	Back home	Out door	Back home	Sleep
6: 00 20℃	8: 00 15℃	11: 30 15℃	13: 30 15℃	17: 00 15℃	22: 00 15℃

The optimum comfort temperature is 18℃-22℃.

Advanced options

Under turn off state, long press for 3-5 seconds to access advanced setting.

From A1 to AD, short press to choose the option, and adjust data by , , short press to switch next option. Remain about 5 seconds after finish setting will quit setting.

NO	Setting Options	Data Setting Function	Factory Default
A1	Measure Temperature Calibration	-9-+9℃	0.5℃ Accuracy Calibration
A2	Temperature control return difference setting	0.5-2.5℃	1℃
A3	External sensors limit temperature control return difference	1-9℃	2℃
A4	Options of sensor control	N1:Built-in sensor (high temperature protection	NI

		close) N2:External sensor (high temperature protection close) N3:Built-in sensor control temperature ,external sensor limit temperature (external sensor detect the temperature is higher than highest temperature of external sensor, thermostat will disconnect relay, turn off load)	
A5	Children lock setting	0:half lock 1:full lock	0
A6	Limit value of high temperature for external sensor	1. 35℃-70℃ 2. Under 35℃, screen display 【--】 , high temperature protection was cancelled	45℃
A7	Limit value of low temperature for external sensor(anti-freeze protection)	1. 1-10℃ 2. Exceed 10℃, screen display 【--】 , Low temperature protection was cancelled.	5℃
A8	Setting temperature lowest limit	1-10℃	5℃
A9	Setting temperature highest Limit	20-70℃	35℃
AA	Descaling function	0:Close descaling function 1:Open descaling function (valve is continuously closed over 100 hours , it will be opened for 3 minutes automatically)	0:Close descaling function
AB	Power with memory function	0:Power with memory function 1:Shutdown power after power off 2:Shutdown power after power on	0:Power with memory function
AC	Weekly programming selection	0: 5+2 1: 6+1 2: 7	0: 5+2
AD	Restore factory defaults	Display A o, press key whole show	

Return difference : limit valve of external sensor is 45℃ for factory default (A6), value of external sensor control return difference (A3) is 2. when temperature rise to 45℃, then relay stop working and will remind high temperature production alarm. If temperature decline to 43℃ relay continue to work and heating alarm will be relieved. (it can be operated ,only when indoor temperature is lower than setting temperature)

Sensor fault display: please choose correct working way of built-in and external sensor, if choose wrongly or sensor fault (breakdown), “E1” or “E2” will be displayed on the screen. Thermostat will stop heating until the fault is eliminated

Warranty:

We offer the warranty of 18 months, from the sales day. The products of our company can have lifetime warranty ,if it is not the quality problems, or beyond the warranty period, we will charge for the after-sale service.

WIFI APP Download And Sign Up And Pair Thermostat

Preparation required for Wifi Connection:

A 4G mobile phone and wireless router, reconnect the wireless router on the mobile phone WLAN interface, and record the WIFI password [need to be used when the thermostat is paired with the Wifi. **Note: Wifi from router must be 2.4G, 4G wifi from the other mobile phone hotspot is also ok, 5G router wifi is not ok.**

Step 1 Download your APP



Scan following QR cod and download APP through browser(Android also can search “Smart RM” at Google Play, iPhone also can search “Smart RM” at App Store

Step 2 Register your account

- After install APP,click “register” (Fig 2-1)
- Please read the Privacy Policy and press Agree to proceed to the next step. (Fig 2-2)
- Registration account name uses your available Email Or mobile phone number, and please select Region, then click “Continue”(Fig 2-3)
- You will receive a 6-digit verification code from your email or SMS and enter your phone (Fig 2-4)
- Please set the account password, Password must contain 6-20 letters and numbers. click “Done”(Fig 2-5)

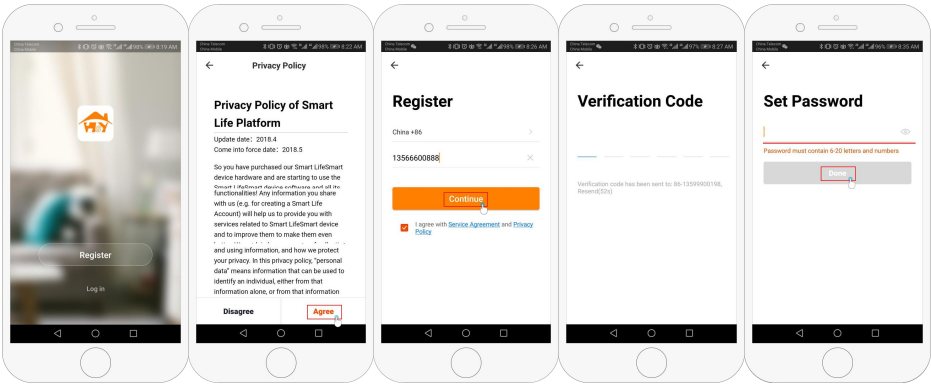


Fig 2-1

Fig 2-2

Fig 2-3

Fig 2-4

Fig 2-5

Step 3 Create family information(Fig 3-1)

1. Fill in the family name(Fig 3-2).
2. Select or add a room(Fig 3-2).
3. Set location (Fig 3-4)

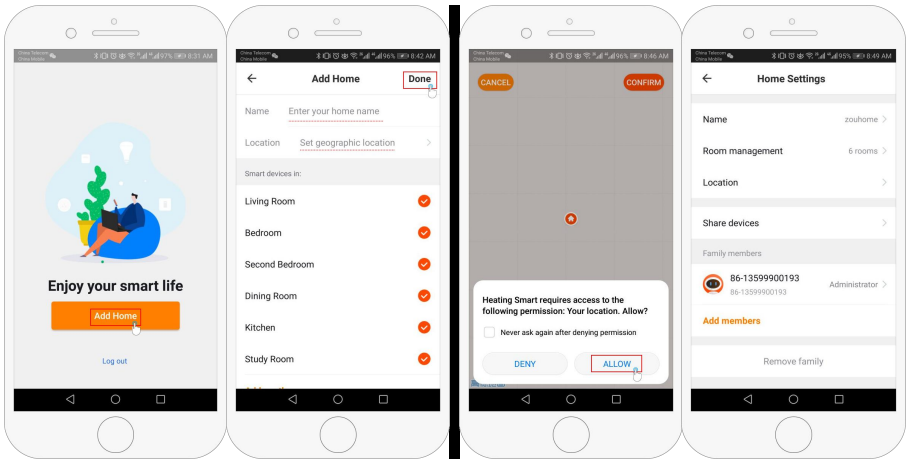


Fig 3-1

Fig 3-2

Fig 3-3

Fig 3-4

Step 4 Connect your Wi-Fi signal

In the power-on state, press and hold the button and at the same time, the icon flashes to indicate the EZ distribution mode, the icon flashes to indicate the ap distribution mode, the icon indicates that the phone has been disconnected with the device.

Press "Add Device" or "+" in the upper right corner to add the device (Fig 4-1) and select the device type "Thermostat" (Fig 4-2)

On your thermostat, Click Confirm icon rapidly blink. then select your network and back to your app to enter the password of your wireless router (fig 4-4) and confirm.The app will connect automatically (Fig 4-5) This may typically take up to 5~90 seconds to complete. This is Ez mode which provides fast network connection between your app and your device.

Your room name could be edited when the device is connected , And you can choose the corresponding room location. For example, bedroom, kitchen, living room, etc

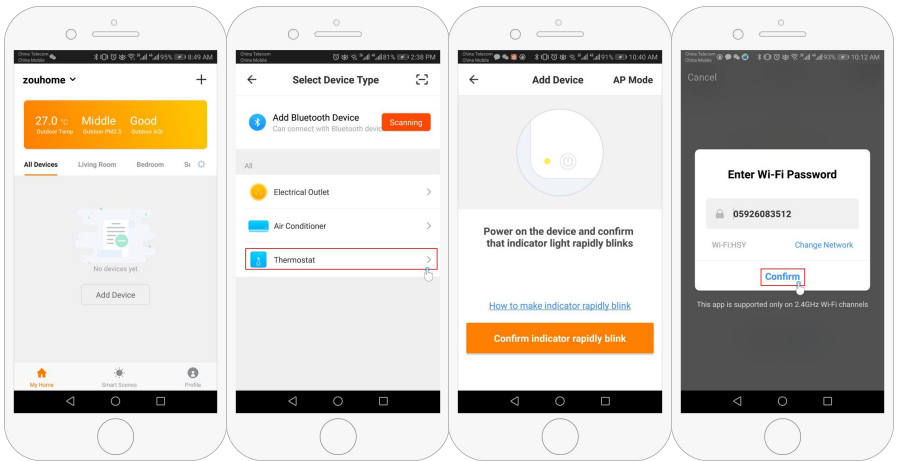


Fig 4-1

Fig 4-2

Fig 4-3

Fig 4-4

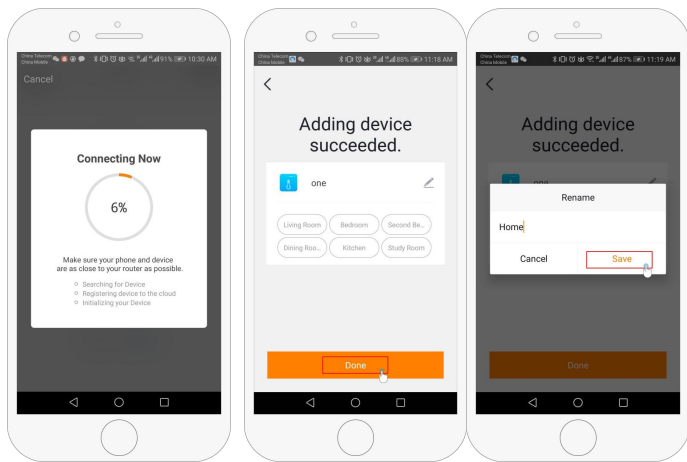


Fig 4-5

Fig 4-6

Fig 4-7

Step 5

If your router doesn't support it or your wifi signal is weak or you can not connect by EZ mode, press the AP Mode on the upper right corner in (Fig 5-1) If you have connected your thermostat successfully, please ignore the app setting as blow On your thermostat

Click Confirm icon rapidly blink then select your network and back to your app to enter the password of your wireless router (fig 4-4) and confirm.The app will go into the page in (Fig 5-2)

Press Connect now to select the wifi signal Smartlife-XXXX of your thermostat (Fig 5-3)

Go back to your app and click Connect now then the app will connect automatically (Fig 4-5)

This may typically take up to 5~90 seconds to complete.

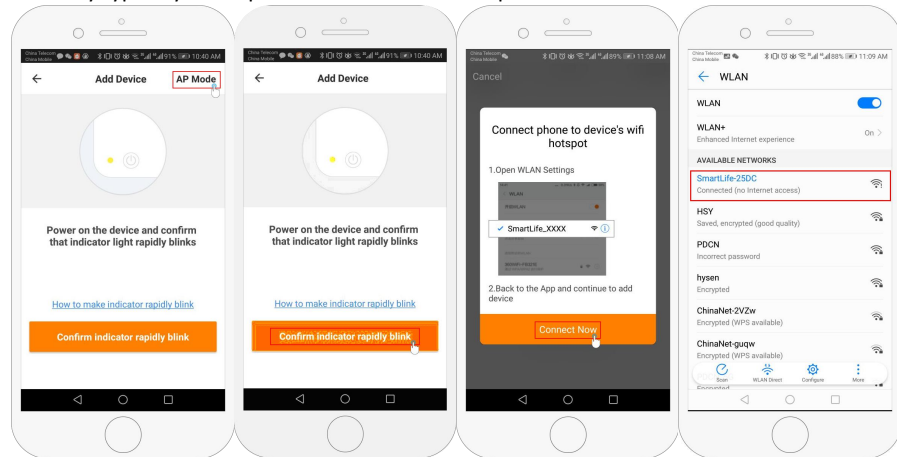


Fig 5-1

Fig 5-2

Fig 5-3

Fig 5-4

Step 6 APP Device interface operation and How to create a group

1. Power on/off button
2. Mode key: Manual mode, Auto mode, Holiday mode.
3. Child lock: After the child lock turned on, the APP cannot be operated.
4. Set key: After clicking on, you can select the programmed mode (5+2, 61, 7 days) and set the

temperature and time for the six periods of the weekday and weekend.

5. Basic information page (Fig 6-1、Fig6-2)

Device name: The device name can be modified according to your demand.

Device location:

Share device: Share the device to the mobile phone or email account of the registered family member

Create Group: Add all the devices which need to operate at the same time to the created group for convenient operation.

Device information; Contains virtual ID; IP address; Mac address; Device time zone

Remove device: After deleting the device, you need to reconnect the network if you want to use it.

Third-party controls supported: amazon alexa/google assistant/IFTTT, click to enter, you will see the steps

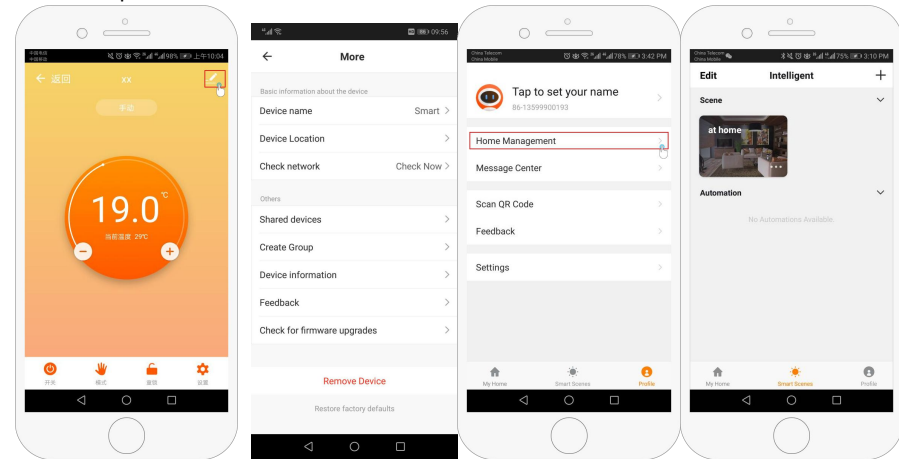


Fig 6-1

Fig6-2

Fig6-3

Fig6-4

Step 7 Family management (Fig6-3)

Add family: Family naming; family location setting; select room name, you can also add room name, upon completion, it will enter the Home Setting interface.

Step 8

What is your Smart Scene and How to use it? (Fig6-4)

set your home to automatically turn on thermostat on when you back home(fig).Press + button into the setting

Step 1:You can set a condition for task like Temperature below 21 degree,then click save , (condition:temp.,Humidity,weather,PM2.5, Air Quality,Sunrise/Sunset,Device)

Step 2: Add a task. Press + to Select Device (Power,Set Temp,Lock Mode) to act, then Save.If you want to delete the scene,you can press Delete in the end.

NOTE: The room sound could be turned on/off in PROFILE-SETTING-SOUND. The sound is matched with the default of your system